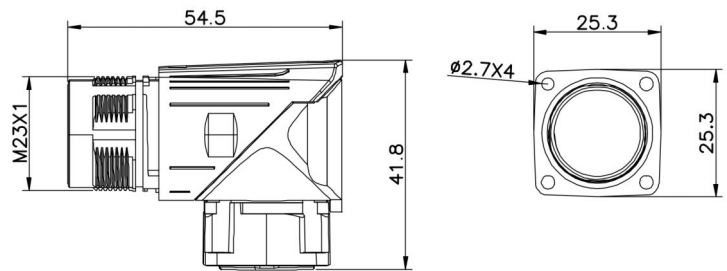
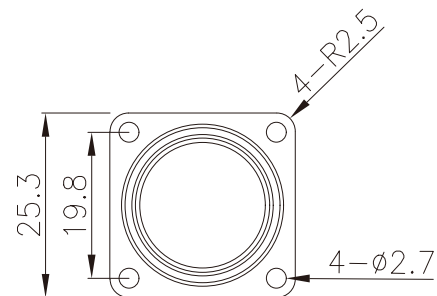
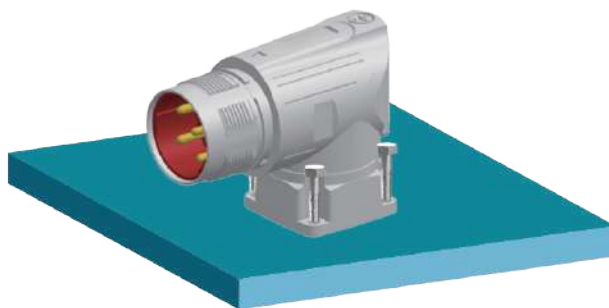


# M23 Series

- M23 923 signal male 90degree socket
- Description:M23 923 signal male 90degree metal socket



## Assembly Instruction



## Technical Date

Pin No.	6	8
Pin for reference		
Coupling	Threaded coupling	
Rated current	30A	9A/20A
Rated voltage	630V	250V/630V
Operating Temperature	-20 C ~85 C	
Degree of protection	IP67	
Termination	Solder	
Mechanical operation	>500 mating cycles	
Contact resistance	≤3mΩ	
Material of contact	CuZn/CuSn(brass/bronze)	
Contact plating	Au(gold plating)	
Material of contact body	PET (UL 94 V-0)	
Material of housing	CuZn(brass,nickel plated)	
Wire gauge	14AWG	20AWG

## Order Information

■ Part No.	■ Model No.
M23-MR- <input type="text"/> -923 Pin No.	RG92305

Remark:Contact us any time if you have custom requirements.