

- RG2910 waterproof connector
- Description:RG2910 assembly waterproof connector mate with RG2911/RG2912/RG2913

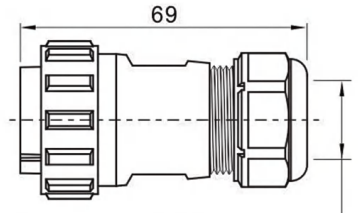
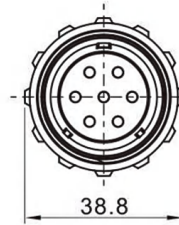


RG2910/P _ _ N



RG2910/S _ _ N

I: solder II: screw III: crimp
Number of contact



Cable outer diameter range: 13-16mm

- RG2911 waterproof connector
- Description:RG2911 assembly waterproof connector mate with RG2910/RG2916

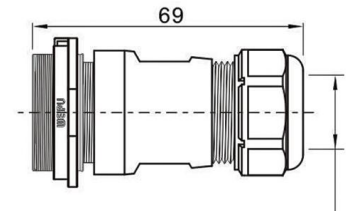
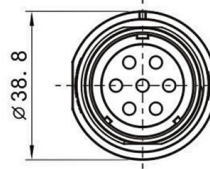


RG2911/P _ _ C



RG2911/S _ _ C

I: solder II: screw III: crimp
Number of contact



Cable outer diameter range: 13-16mm

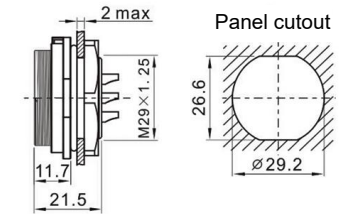
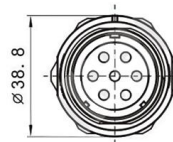
- RG2912 waterproof rear panel mount connector
- Description:RG2912 waterproof rear panel mount connector mate with RG2910/RG2916



RG2912/P _ _ C



RG2912/S _ _ C



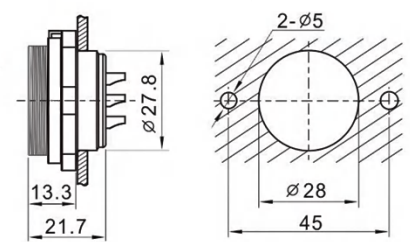
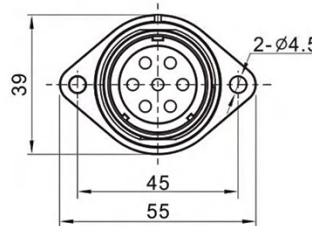
- RG2913 waterproof 2-hole flange connector
- Description:RG2913 waterproof 2-hole flange connector mate with RG2910/RG2916



RG2913/P _ _ C



RG2913/S _ _ C



- RG2916 waterproof assembly 90degree connector
- Description:RG2916 assembly waterproof cable 90degree connector mate with RG2911/RG2912/RG2913

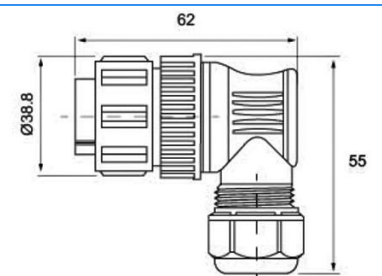


RG2916/P _ _ N



RG2916/S _ _ N

I: solder II: screw III: crimp
Number of contact



Cable outer diameter range: 13-16mm