

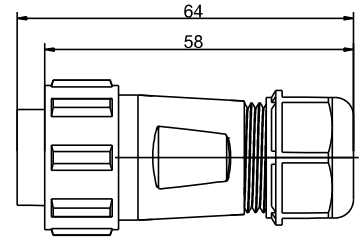
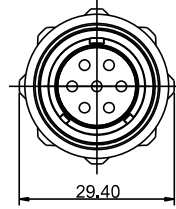
- RG2110 waterproof connector
- Description:RG2110 assembly waterproof connector mate with RG2111/RG2112/RG2113



RG2110/P _ _ _ N

RG2110/S _ _ _ N

Number of contact _____ I: solder II: screw III: crimp
 Cable outer diameter : I: 4.5-7mm II: 7-12mm



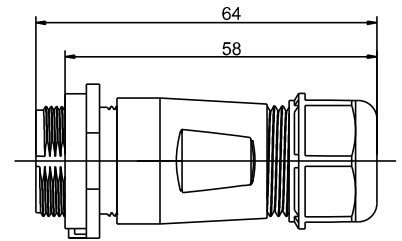
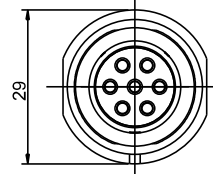
Cable outer diameter range:
 I: 4.5-7mm, II: 7-12mm

- RG2111 waterproof connector
- Description:RG2111 assembly waterproof connector mate with RG2110/RG2116



RG2111/P _ _ _ C

RG2111/S _ _ _ C



Cable outer diameter range:
 I: 4.5-7mm, II: 7-12mm

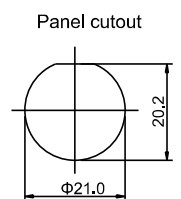
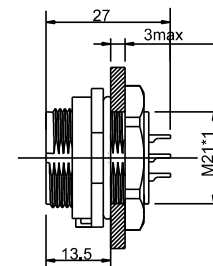
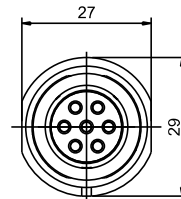
- RG2112 waterproof rear panel mount connector
- Description:RG2112 waterproof rear panel mount connector mate with RG2110/RG2116



RG2112/P _ _ C

RG2112/S _ _ C

Number of contact _____ I: solder II: screw III: crimp



- RG2113 waterproof 2-hole flange connector
- Description:RG2113 waterproof 2-hole flange connector mate with RG2110/RG2116



RG2113/P _ _ C

RG2113/S _ _ C

