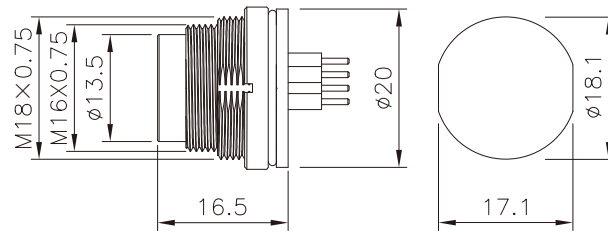
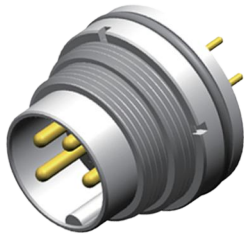
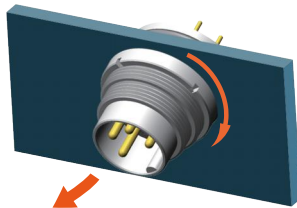


- M16 male panel mount connector ,straight.
- Description:M16 male front panel mount connector , PCB type

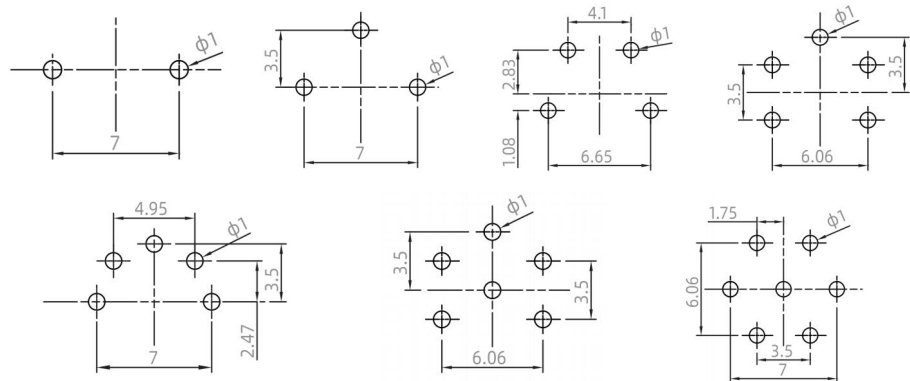
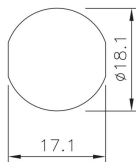


Assembly Instruction



Drilling schemes male insert (PCB):

Hole Size:



Technical Data

| Pin No. | 2 | 3(DIN) | 4 | 5 | 5(Stereo) | 6(DIN) | 7 |
|--------------------------|-------------------------------|--------|------|------|-----------|--------|------|
| Pin for reference | | | | | | | |
| Type | panel mount | | | | | | |
| Rated current | 7A | 7A | 6A | 6A | 6A | 5A | 5A |
| Rated voltage | 250V | 250V | 250V | 250V | 250V | 250V | 125V |
| Operating Temperature | -20 C ~80 C | | | | | | |
| Degree of protection | IP67/IP68 | | | | | | |
| Connector locking system | PCB | | | | | | |
| Mechanical operation | >500 mating cycles | | | | | | |
| Contact resistance | $\leq 5m\Omega$ | | | | | | |
| Material of connector | CuZn,TPU | | | | | | |
| Contact plating | Au(gold plating) | | | | | | |
| Material of housing | Zinc diecasting nickel plated | | | | | | |

Order Information

| | |
|---|-------------|
| ■ Part No. | ■ Model No. |
| M16-PMP-M- <input type="text"/> -F-M18 Pin No. | RG163005 |
| Remark:Contact us any time if you have custom requirements. | |