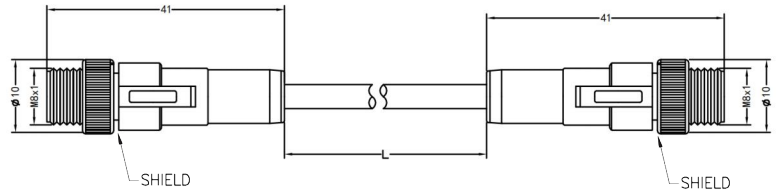
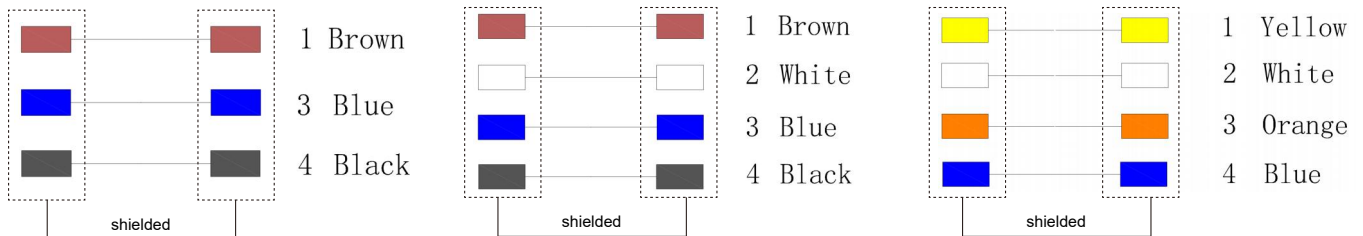


- M8 male to male molded cable, shielded
- Description: M8 male straight to male straight shielded molded cable ,A/B/D coded



### Assembly Instruction



### Technical Data

Pin No.	3	4	4	5	6	8
Coding	A	A	D	B	A	A
Pin for reference						
Type	Molded					
Rated current	3A	3A	4A	3A	1.5A	1.5A
Rated voltage	60V	60V	60V	30V	30V	30V
Operating Temperature	-25 C ~ 85 C					
Degree of protection	IP67/IP68					
Connector locking system	Solder					
Mechanical operation	>500 mating cycles					
Contact resistance	≤10mΩ					
Material of connector	CuZn, TPU or PVC					
Contact plating	Au(gold plating)					
Cable size	0.25mm <sup>2</sup>	0.25mm <sup>2</sup>	0.25mm <sup>2</sup>	0.25mm <sup>2</sup>	0.14mm <sup>2</sup>	0.14mm <sup>2</sup>

### Order Information

Part No.	Model No.
M8- <input type="text"/> -MS- <input type="text"/> - <input type="text"/> - <input type="text"/> -MS-SH Coded      Pin No.      Length      Cable materials	RG081070

Remark: Shielded wire contact the metal shell. Contact us any time if you have custom requirements.